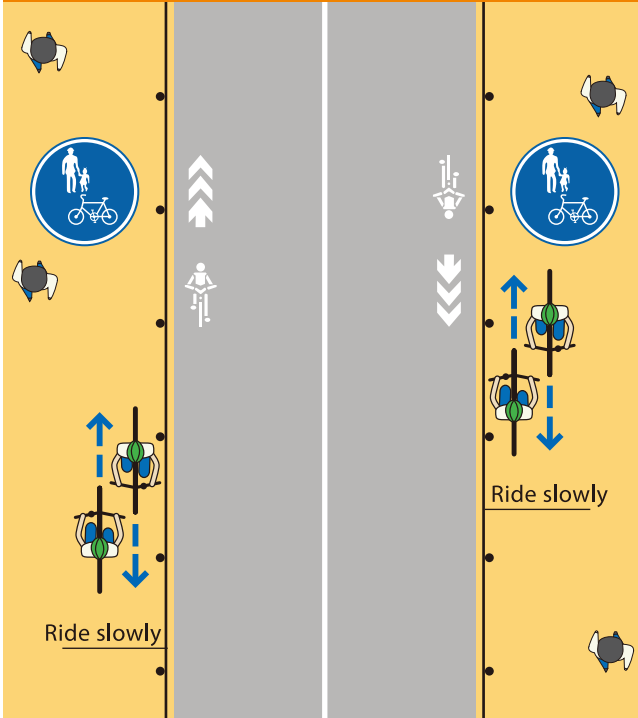



SHARE THE ROAD

You may ride on the sidewalk if you feel that using the road would be dangerous.

However, you must ride slowly on the side nearest to the road.



Even if there are Bicycle markings, you may still ride on the sidewalk if:

- there is a  road sign.
- you are aged under 13 or 70 and over.
- you are physically disabled.
- doing so is necessary for safety.

When riding on the sidewalk, ride slowly on the side nearest to the road and stop if you would obstruct the passage of pedestrians.

Five Rules for Safe Cycling

- (1) Use the road in principle and the sidewalk as an exception.
- (2) Cycle on the left side of the road.
- (3) On the sidewalk, give way to pedestrians and ride slowly on the side nearest to the road.
- (4) Obey the rules on road safety.
 - Cycling under the influence of alcohol is prohibited.
 - Double riding is prohibited.
 - Riding side-by-side is prohibited.
 - You must use lights at night.
 - Traffic lights must be obeyed.
 - Stop before entering an intersection.
- (5) Children must wear a helmet.

Although more bicycle lanes are appearing in Japan, the road can still be a crowded and dangerous place.

That's why we've launched this campaign to encourage everyone to share the road safely and make accident-free roads more than a dream.

Remember the rules of the road, respect other road users, and you'll reach your destination safer and sooner.

SHARE THE ROAD

Remember the rules, respect other road users, and reach your destination safer and sooner.

Supporters of the SHARE THE ROAD campaign

IKIGAI Project
The General Insurance Association of Japan
Tokyo Good Manners Project Association

This leaflet was prepared based on information provided by the Metropolitan Police Department.

october 2018 edition

SHARE THE ROAD



Cyclists should ride on the

Bicycle markings

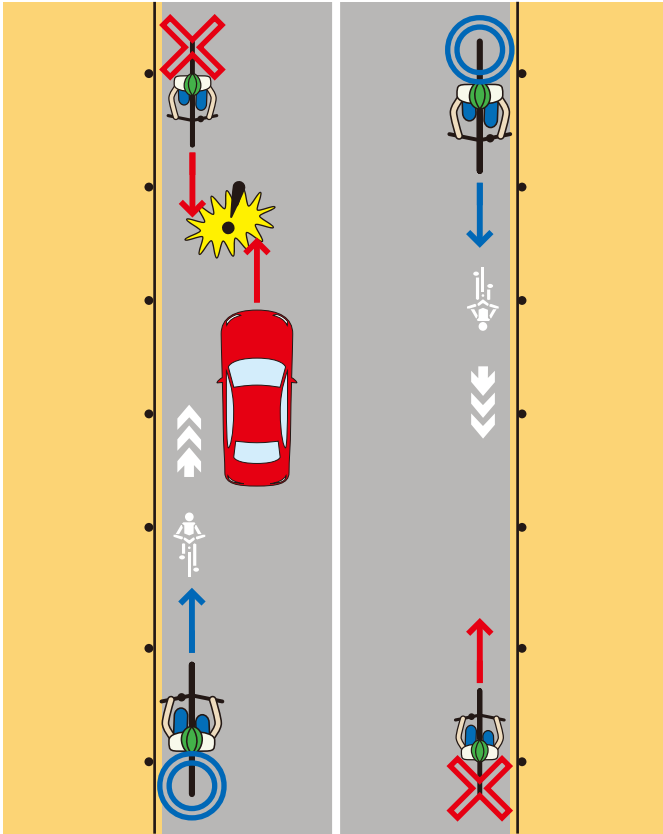
◀ on the left side of the road

Bicycle lines

◀ mainly found at and near intersections.

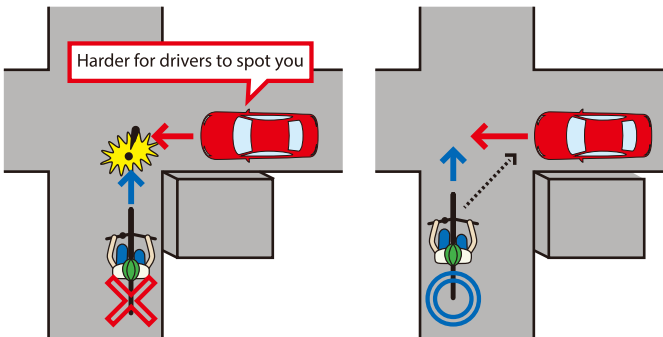
SHARE THE ROAD

Cyclists should ride on the left side of the road along the Bicycle markings.



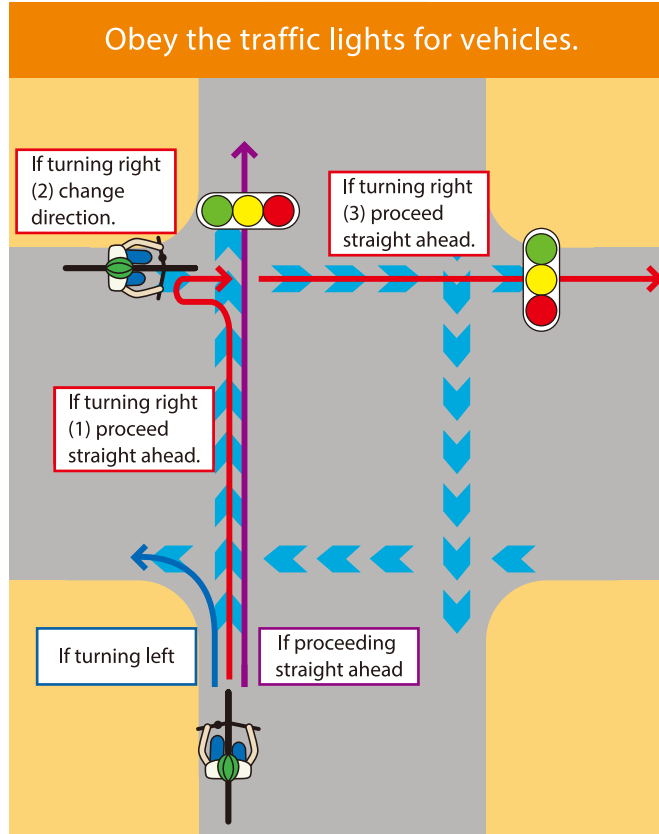
Riding on the right can cause a collision at an intersection.

You can spot a vehicle sooner if you cycle on the left.

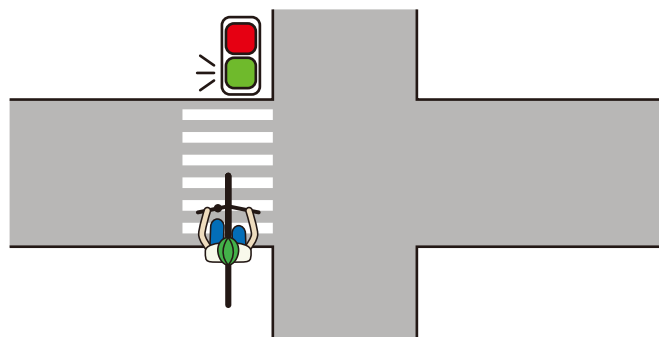


SHARE THE ROAD

At intersections, follow the Bicycle lines.

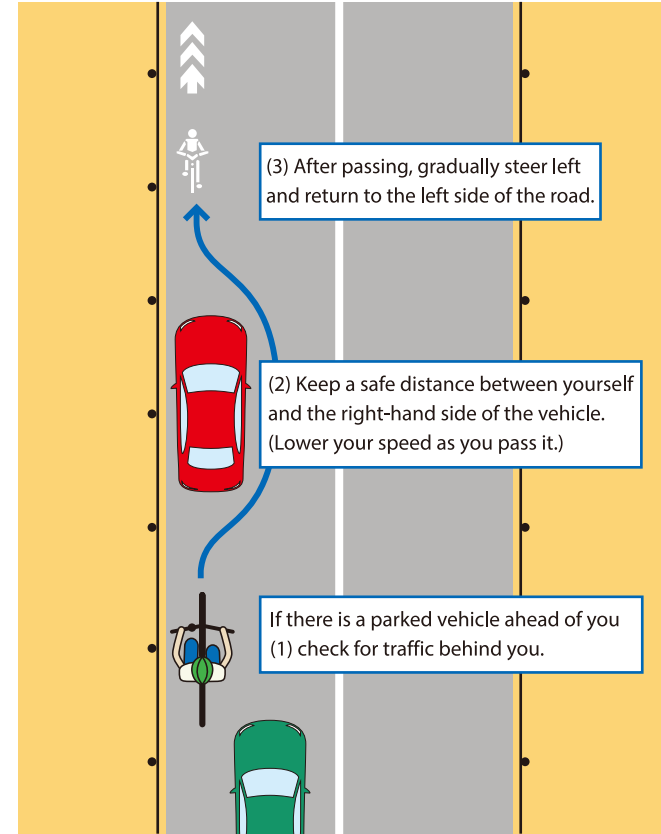


When crossing at a pedestrian crossing, obey the traffic lights for pedestrians.



SHARE THE ROAD

If there is a parked vehicle ahead of you, check carefully for traffic behind you.



When moving from the sidewalk to the road or vice versa, be particularly careful of vehicles and pedestrians.

